

How to Download and Install GOM Inspect Suite (Free)

CREATED: FEB 16, 2021

VERSION: GOM INSPECT SUITE 2020

How to Download and Install GOM Inspect Suite (Free)

GOM Inspect Suite is a 3D inspection and measurement software created by GOM. It allows users to evaluate the overall quality of their manufactured parts through comparing CAD models against 3D scan data and creating complete inspection plans through its comprehensive list of inspection tools. There are additional workspaces with tools dedicated for further operations within the software, including Mesh Editing and Reporting.

GOM Inspect Suite is available as a free download from the GOM website. A paid professional version of the software is also available for users looking to take advantage of the additional software functionalities. A more detailed list of the features contained in GOM Inspect Suite and the Professional version can be found in the [GOM Inspect Suite official website](#).

For users looking to download and install the free version of the software for the first time, this guide will provide all the necessary steps to get started. Prior to beginning the installation process, consult the system requirements of the latest GOM Inspect Suite software, and ensure that administrative privileges have been granted to the PC's user account.

Minimum System Requirements (GOM Software Version 2020)

CPU: Intel Core i3

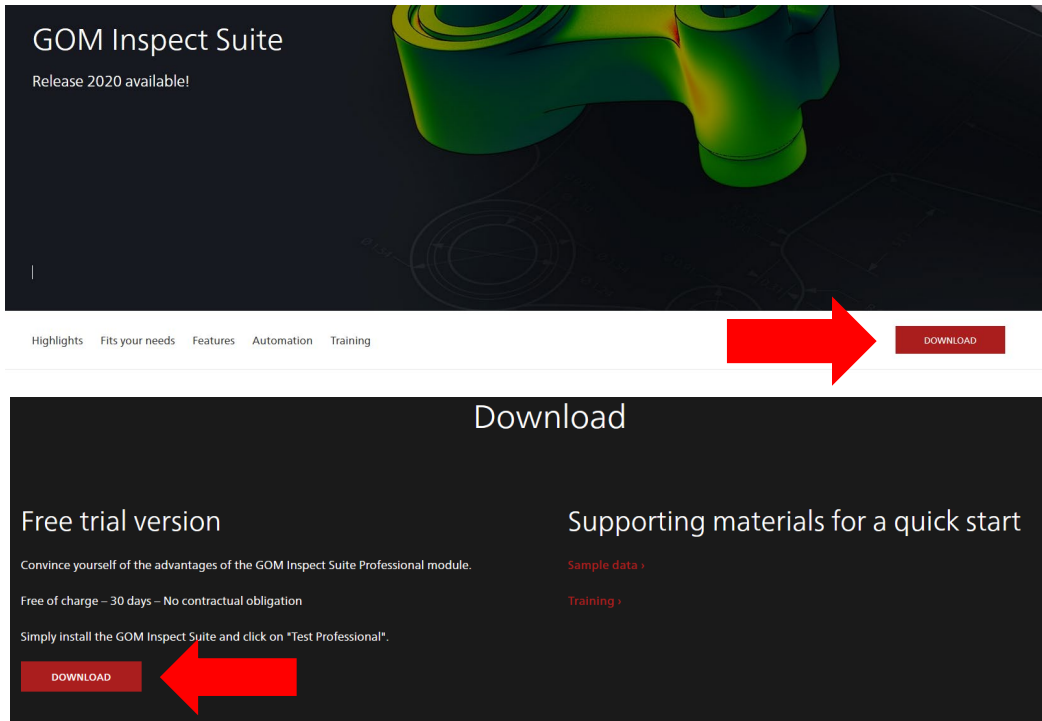
Memory: 4 GB RAM

Video Card: OpenGL-compatible graphics card (NVIDIA Quadro for optimized hardware rendering)

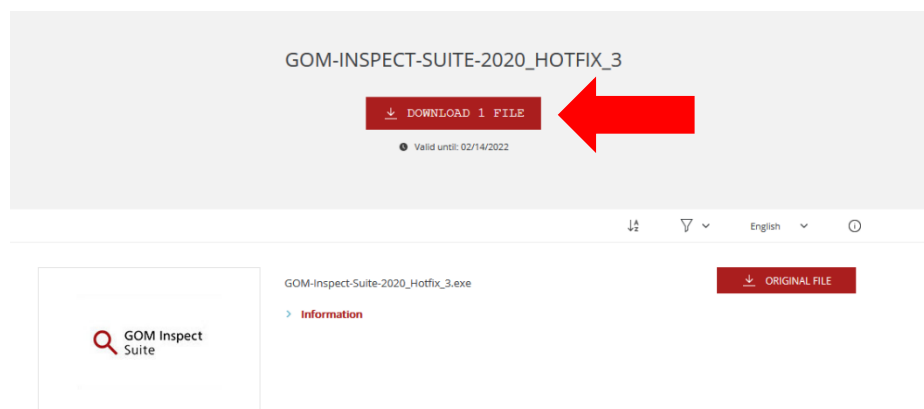
Operating System: Windows 7®, 64 bit (GOM Inspect Suite is compatible with Windows 7® / Windows 8® / Windows 10® Operating System)

Downloading GOM Inspect Suite

1. The download page can be found on the [GOM official website](#) under the Products >> GOM Inspect Suite section. A red “Download” box can be found there, which will direct you to the download page.



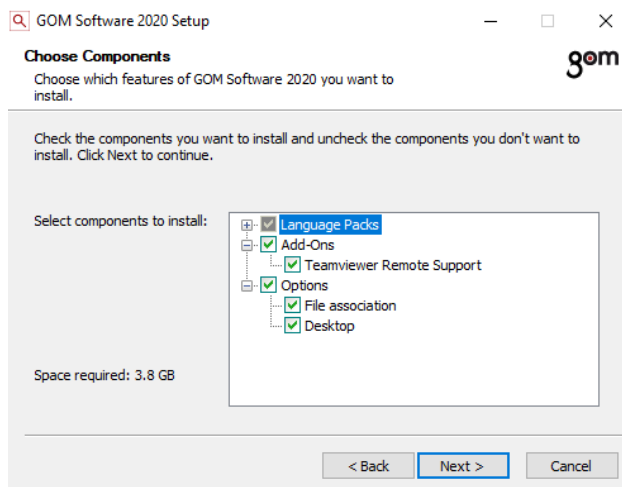
2. Once the Download button has been clicked, a page with the installation file download link will appear. The latest version of the software will be automatically selected for download. Click the “Download 1 File” or “Original File” button to initiate the download process.



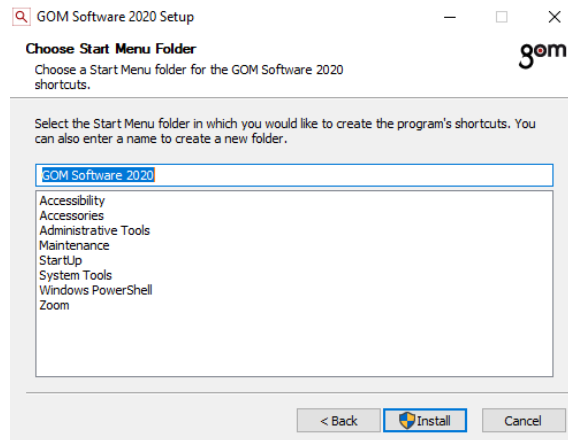
3. The installation file will download through the browser. Once the download completes, run the file to begin the installation process. Administrator access may be required to run the installation.
4. The GOM Inspect Suite installer will open. Click Next on the first page and accept the terms of the License Agreement. Click Next when completed.



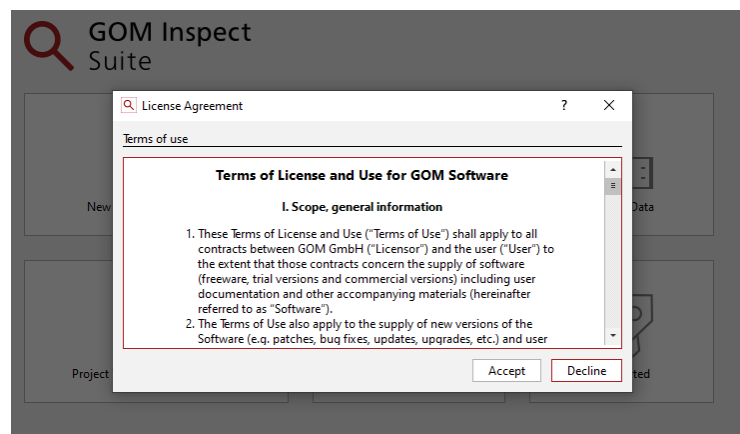
5. A page titled Choose Components will appear where the components of the installation can be selected for installation. It is recommended to leave all options checked, then click Next to proceed.



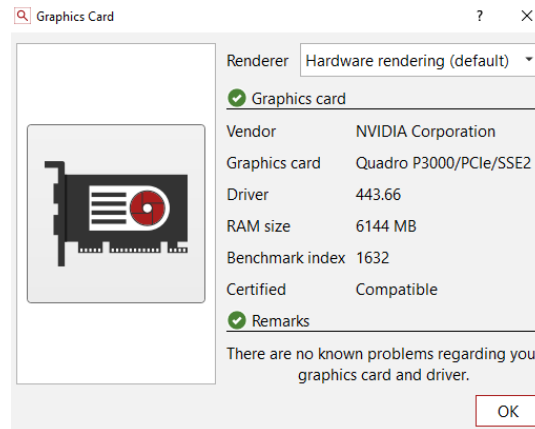
6. The installation location can then be specified. The default location of C:\Program Files\GOM\(\YEAR-VERSION) will be automatically selected. Click “Next” once the destination has been specified.
7. The Start Menu folder can be specified as well. The default folder of GOM Software 2020 will be automatically selected. Click “Install” to begin the software installation.



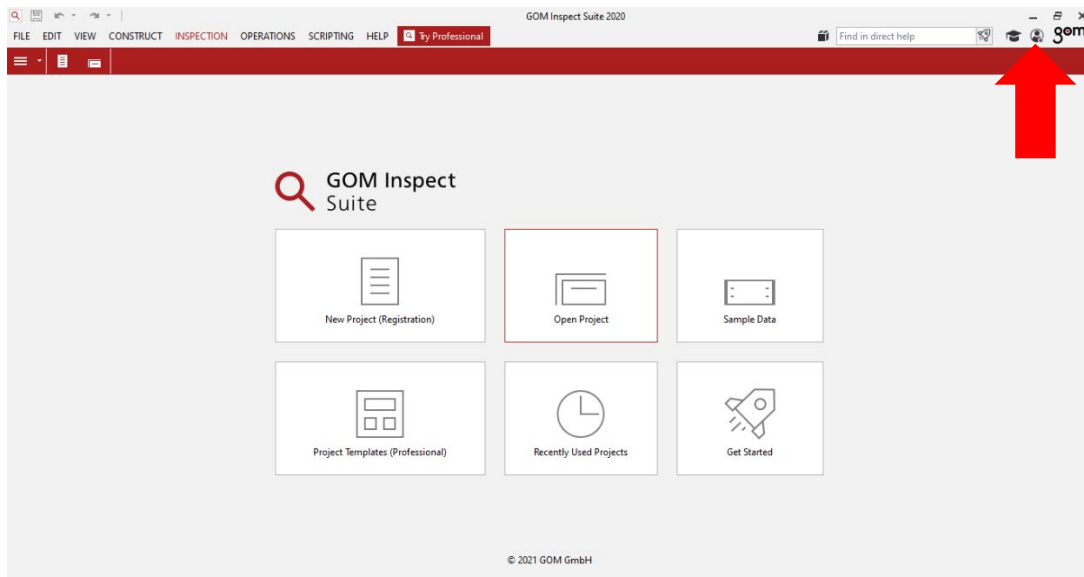
8. The installer will proceed to install the software with the specified options. Once completed, the software can be run by clicking the Desktop icon or selecting it from the Start Menu.
9. Upon running GOM Inspect Suite for the first time, the software will prompt for an acceptance of the License Agreement as well as a mandatory graphics card benchmark test. Click Accept on the License Agreement, then select OK and wait for the software to run the benchmark test.



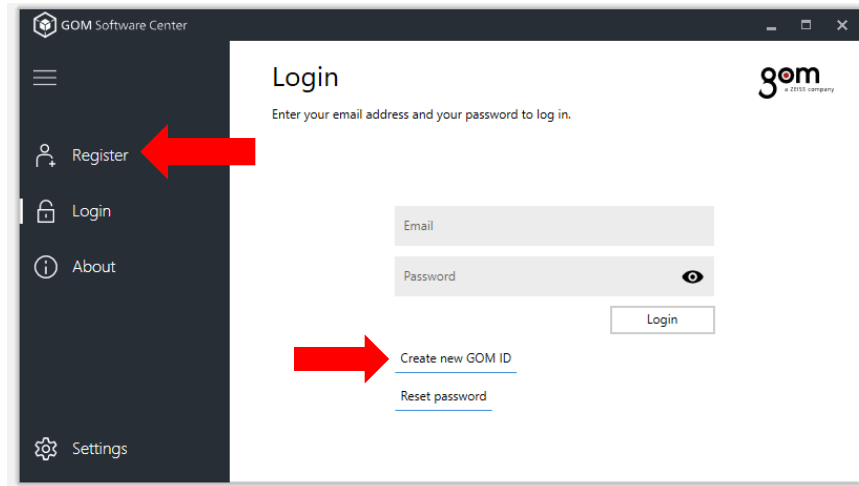
When the benchmark test completes, the software will confirm whether a certified graphics card and driver has been installed or not. To avoid issues while using GOM Inspect Suite, it is recommended to use a certified graphics card. For more information, refer to the system requirements section.



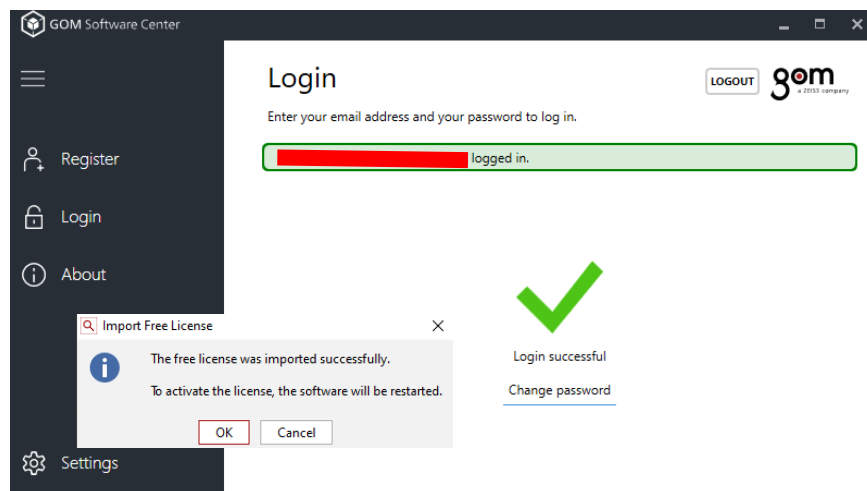
10. Once the benchmark test has been completed, a registered GOM ID will need to be used to log into the software to unlock the free features. A GOM ID can be created for free through the software's login section. Click the user icon (👤) on the top-right corner to open the login screen. Registration can also be completed online through the [myGOM webpage](#).



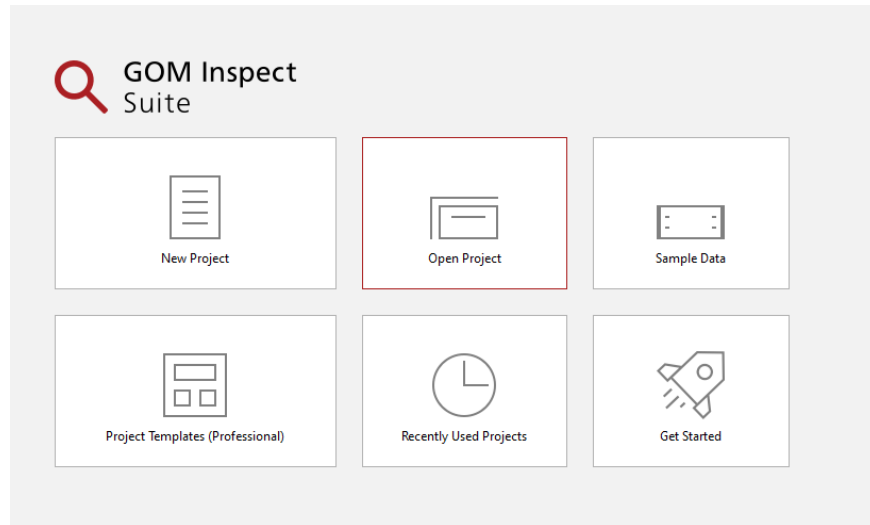
11. The GOM Software Centre window will appear where users can log in with an existing GOM ID or register a new account. To create a new account, select the “Register” button from the side panel or the “Create a new GOM ID” button.



12. Fill in the required information on the Registration page, then click “Register” to complete the process. A verification email will be sent to the email address provided upon registration. Once the email has been verified and the account is used to log into the software, a “Login Successful” message will appear as well as a prompt to restart the GOM Inspect Suite software to activate the free license.

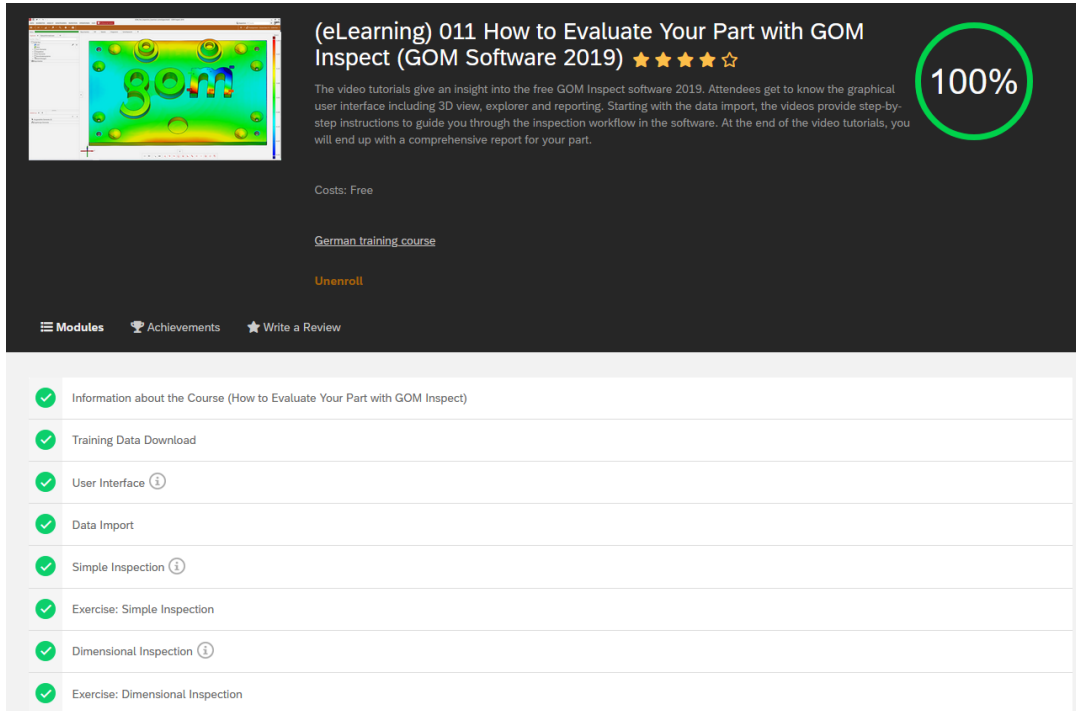


13. When the software restarts, the Free version of the software will be unlocked, and the “New Project” command can be used to start an inspection project. Professional features will remain locked while using the free version of the software.



Free Online Training Course

GOM offers a free eLearning course for users looking for basic training on creating an inspection project. The course, titled “How to Evaluate Your Part with GOM Inspect (GOM Software 2019)”, can be found in the [GOM Training Portal](#). A GOM ID is required to log in and access the free content. Additional courses can be found through the Training Portal.



(eLearning) 011 How to Evaluate Your Part with GOM Inspect (GOM Software 2019) ★★★★★

The video tutorials give an insight into the free GOM Inspect software 2019. Attendees get to know the graphical user interface including 3D view, explorer and reporting. Starting with the data import, the videos provide step-by-step instructions to guide you through the inspection workflow in the software. At the end of the video tutorials, you will end up with a comprehensive report for your part.

Costs: Free

[German training course](#)

[Unenroll](#)

Modules Achievements Write a Review

- Information about the Course (How to Evaluate Your Part with GOM Inspect)
- Training Data Download
- User Interface ⓘ
- Data Import
- Simple Inspection ⓘ
- Exercise: Simple Inspection
- Dimensional Inspection ⓘ
- Exercise: Dimensional Inspection

For further questions or to request support, you may contact us through the following options:

- Call our Support Team at 416-213-0533 ext. 1
- Email us at support@cadmicro.com